

AF 20/30 Door Handle Update Kit

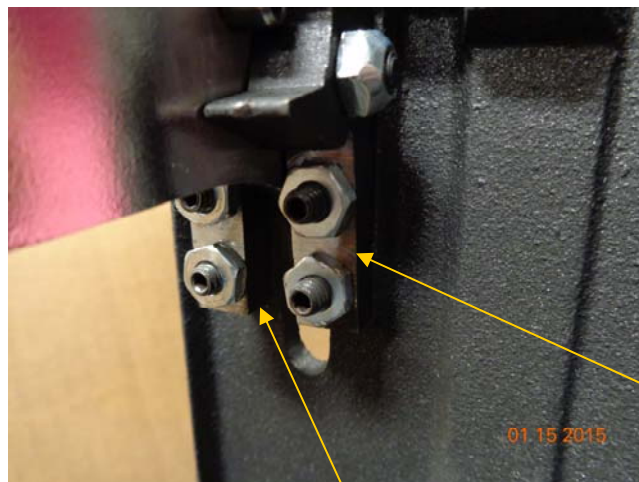
Remove existing handle bolt and nut . Pay special attention to the washers and there placement on each side of the handle assembly.

Remove existing button head cap screws and handle stop blocks. Install (4) 10-24 socket set screws with the 3/32" allen key provide. Tighten the set screw until fully seated.



Re-assemble door handle stop blocks with 10-24 hex nuts provided (**do not fully tighten at this time**). Reposition the handle bolt through the handle stop blocks and the handle to align the stop blocks. (Washers are not required at this time).

Tighten the 10-24 nuts with the handle bolt in place with a 3/8" wrench. NOTE: you may be only able to tighten the bottom nuts with the handle and pin in place. If so remove the bolt and reposition the handle to give access to the remaining nuts. The flat on the nut must be aligned with the edge of the handle stop as shown in the diagram below. Once tightened , re-assemble the handle bolt with the washers as noted above. Tighten the handle bolt to give sufficient handle movement.



Handle stop block

Nut flat edge and edge of handle stop block must be parallel