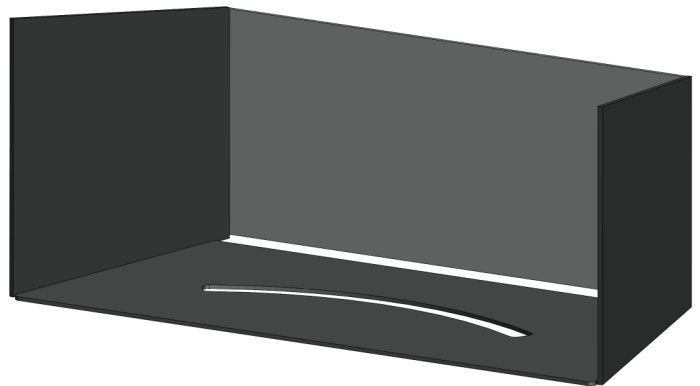
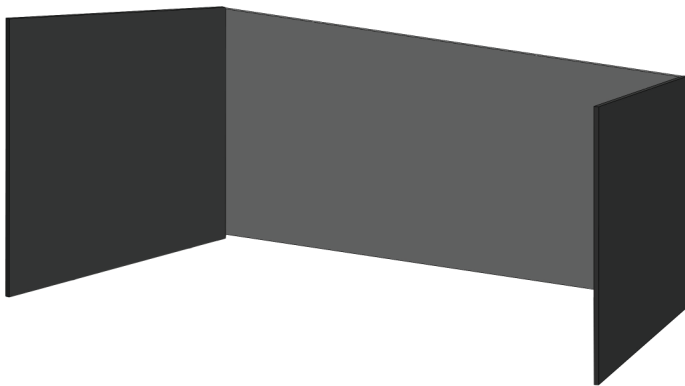




S.0402 Firebox Glass Kit (3 piece)

S.0602 Firebox Glass Kit (4 piece)



for S.CL2714 Clarity Fireplace Insert



CALIFORNIA PROPOSITION 65

WARNING: This part is to be used in a heating appliance that can expose you to chemicals including benzene, which is known to the State of California to cause cancer and birth defects or other reproductive harm. For more information:

www.P65Warnings.ca.gov

Manufactured By

Valley Comfort Systems Inc.
1290 Commercial Way
Penticton, BC V2A 3H5
CANADA
Phone: 250-493-7444
Fax: 250-493-5833

Blaze King Industries
146 A Street
Walla Walla, WA 99362
U.S.A.
Phone: (509) 522-2730
Fax: (509) 522-9803

Pour la version française de nos manuels S.V.P. vous référez à notre site web: www.blazeking.com

1. If burning, turn off the appliance and allow it to cool down completely.
2. For glass panel installation the safety screen trim and glass door must be removed, refer to the CL2714 owner's manual for instructions.
3. Remove the steel floor plate and set it aside. (Fig. 1)

NOTE: FOR THE S.0602 FIREPLACE GLASS KIT (4 piece) THE STEEL FLOOR PLATE IS NOT REQUIRED.

For the **S.0402 FIREPLACE GLASS KIT (3 piece)** set the steel floor plate aside for STEP 8.

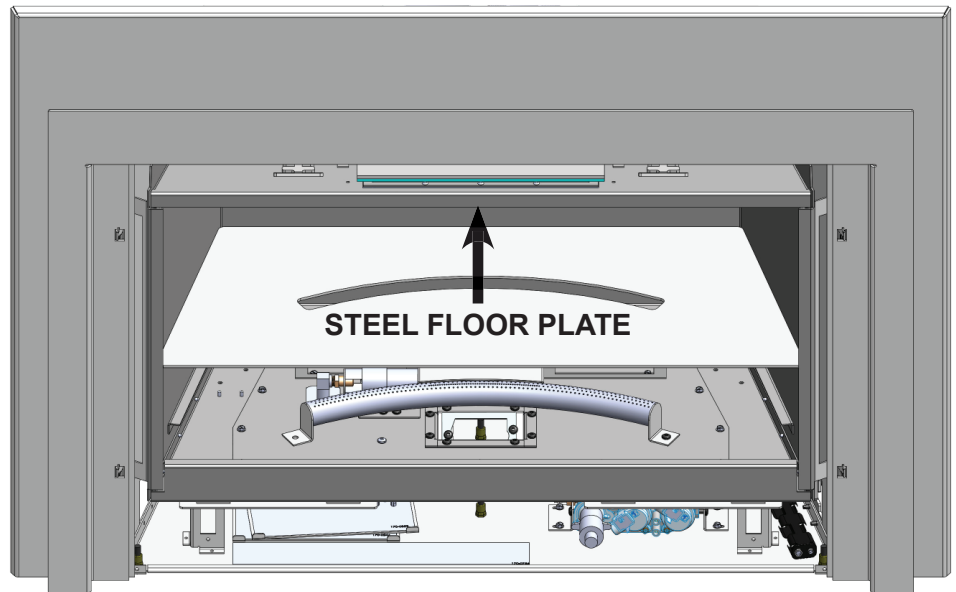


Fig.1

4. **HANDLE GLASS CAREFULLY BY THE EDGES, DO NOT LEAVE FINGERPRINTS, CLEAN IF NECESSARY.**
Loosen the top left tab screw, install the left glass panel up under the tab and onto the support. (Fig.2)

NOTE: THE SIDE WITH LABEL SHOULD BE FACING THE FIREBOX, REMOVE LABEL BEFORE FIRING.

Position the glass such that there is a minimum 1/8" gap around the glass to allow for movement. Turn in the tab screws just enough to hold the glass in place, **DO NOT TIGHTEN.**

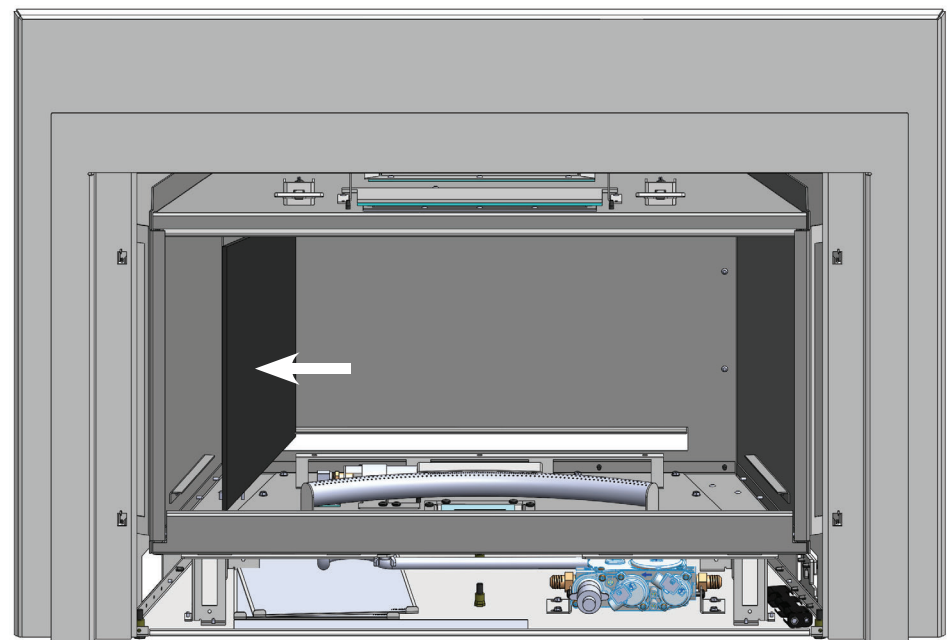


Fig.2

5. Install the back glass panel in behind the left glass panel. (Fig.3) **NOTE: THE SIDE WITH THE LABEL SHOULD BE FACING THE FIREBOX, REMOVE LABEL BEFORE FIRING.**

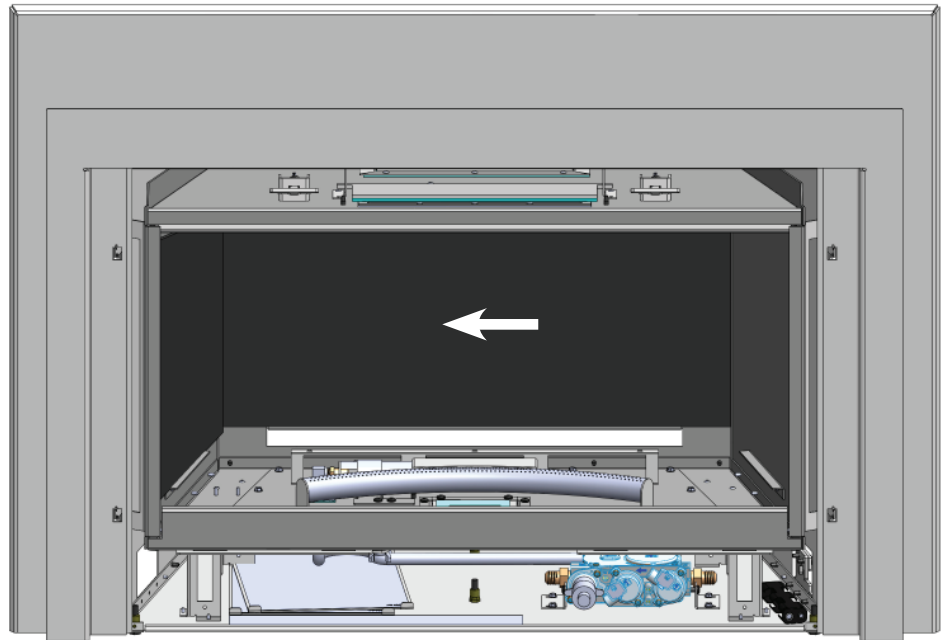


Fig.3

6. Loosen the top right tab, install the right glass panel up under the tab and onto the support. (Fig.4)

NOTE: THE SIDE WITH LABEL SHOULD BE FACING THE FIREBOX, REMOVE LABEL BEFORE FIRING.

Position the glass such that there is a minimum 1/8" gap around the glass to allow for movement. Turn in the tab screws just enough to hold the glass in place, **DO NOT TIGHTEN.**

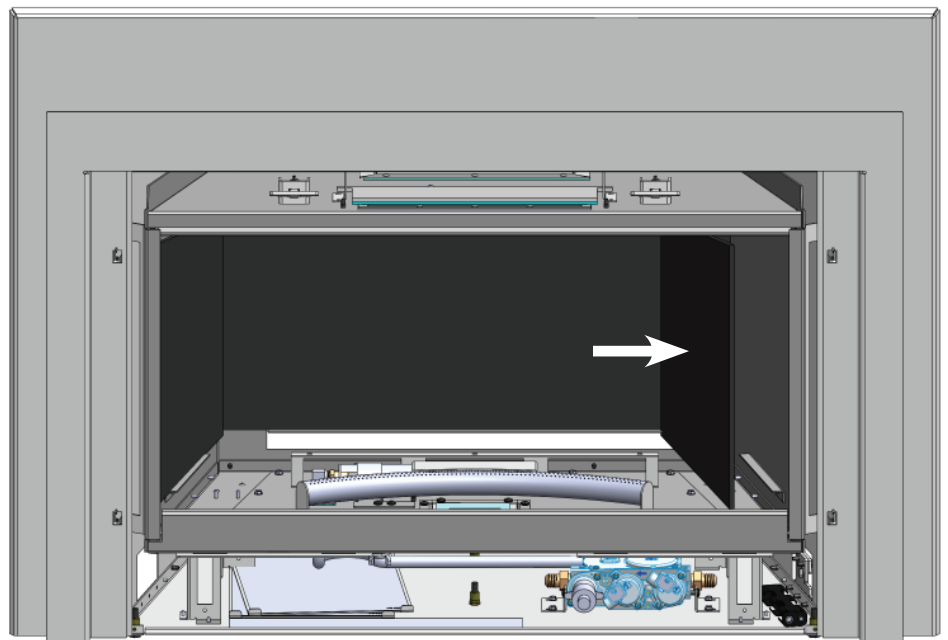


Fig.4

7. If installing the **S.0602 FIREBOX GLASS KIT (4 piece)** set:
Place only the glass floor panel onto the supports between the side glass panels. **(Fig.5)**
NOTE: THE SMOOTH SIDE SHOULD FACE UP.
8. If installing the **S.0402 FIREBOX GLASS KIT (3 piece)** set:
Place the steel floor plate back onto the supports between the side glass panels. **(Fig.5)**

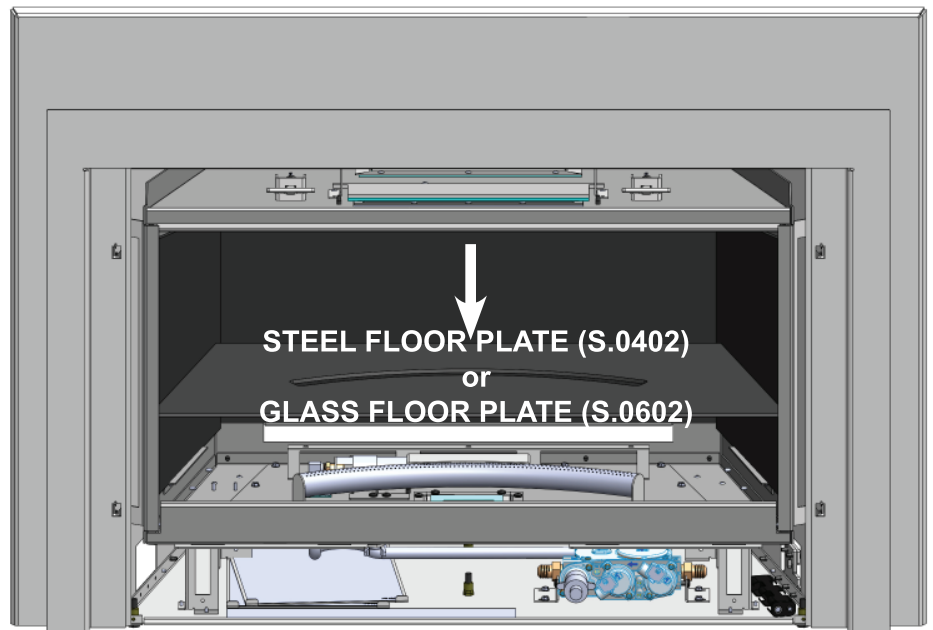


Fig.5

8. If installing the optional log set **S.0519 LOG SET DRIFT CLARITY (5 piece)** or **S.0529 LOG SET DRIFT CL2714 (7 piece)** refer to installation instructions supplied with log set, if not continue below.
9. Repeat "**SAFETY SCREEN TRIM AND GLASS DOOR REMOVAL**" in reverse, refer to the CL2714 owner's manual for instructions.



S.0519 LOG SET DRIFT CLARITY(5 piece)



S.0529 LOG SET DRIFT CL2714(7 piece)