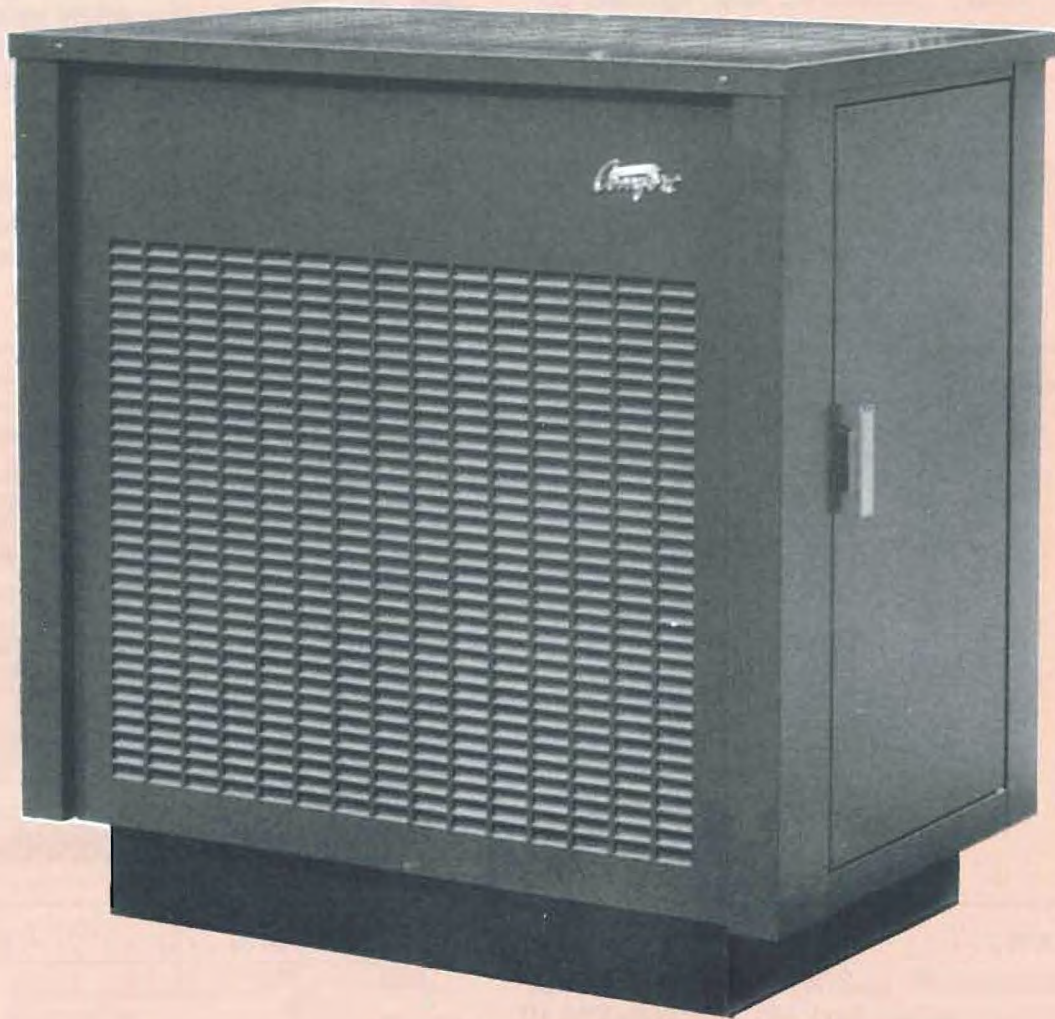


VALLEY
Comfort[®]

Valley Comfort 95

Circulatory wood heating system



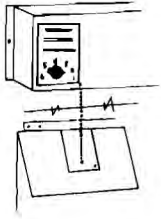
The remarkable

VALLEY COMFORT 95

The new Valley Comfort 95 circulatory wood heating system has the same qualities of heating efficiency, safety and durability which has earned Valley Comfort its over 50-year reputation for dependable wood heating. Improved heat circulation features are added to provide discriminating homeowners with heating equipment which enhances any living area. In addition, an optional, quiet thermostatically controlled 400 cfm blower will move the heat almost anywhere in a home.

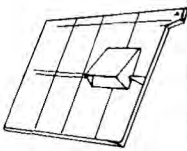
Why More than 75,000 Canadian and U.S. homes use Valley Comfort heaters.

Safety –

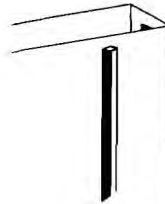


The Valley Comfort's air supply is controlled by an automatic thermostat which is pre-set by the homeowner to provide the temperature level required. It automatically regulates the heat output – unlike the so-called heat regulators on most stoves. In case of a runaway fire it will shut off the air supply completely.

Efficiency –



The unique patented 4-port air supply system provides even burning of logs in the unit and the air convection system moves air around the house.



Convenience –

Overnight burning time on one fill of 2' logs is usual with the Valley Comfort heater thanks to the special secondary combustion supply of pre-heated fresh air to burn wood gases.



Reliability –

Cast iron liners and metal parts made on precision dies all go towards a home heating system which lasts and lasts and lasts to give good, reliable trouble-free heating for the homeowner.



Childproof –

Unlike radiant stoves, Valley Comfort heaters can be safe to a child's touch – an important feature when there are small children around.

How it works...

Pre-heated secondary air is passed through to the top of the combustion chamber. This allows the unburned volatiles to ignite and greatly improves the efficiency of the heater.

The combination of pre-heated primary air and pre-heated secondary air allows the heater to burn wood with greatly improved efficiency over wood-burning heaters of old.

The sensitive automatic thermostat allows you, at any time, to select the best temperature for your home comfort.



Clearances . . .

MINIMUM CLEARANCES TO COMBUSTIBLE MATERIALS
 Top 48" Wood Charging End 48" Opposite End 12"
 Rear 24" Flue Pipe 18" Front 36"

Combustible floor must be protected with a minimum of 9/32" thick non-combustible material extending 6" beyond rear, front and left side of unit AND 18" beyond fire door.



Specifications . . .

MODEL VC95

HEATING CAPACITY	3 to 7 rooms
WIDTH	34 1/2"
DEPTH	22 1/4"
HEIGHT	35"
FLUE SIZE	6"
FUEL DOOR	9 1/4" X 10 1/4"
LENGTH OF WOOD USED	24"
CAPACITY	4 3/4 cubic feet
400 cfm BLOWER	optional
LINERS	cast
SHIPPING WEIGHT	265 lbs



1290 Commercial Way
 Penticton, BC
 V2A 3H5
 Tel. (250) 493-7444
 www.valleycomfort.com
 email: vcsales@vip.net