



S.0529.T Log Set Traditional CL2714 (7 pc)



WARNING

ONLY THE LOG SET SUPPLIED BY THE MANUFACTURER MAY BE USED WITH THIS APPLIANCE. THE LOG SET MUST BE INSTALLED AS DESCRIBED IN THIS MANUAL. DANGEROUS OPERATING CONDITIONS MAY OCCUR IF THESE LOGS ARE NOT POSITIONED IN THEIR APPROVED LOCATIONS. IF LOGS ARE BROKEN, DO NOT OPERATE THE UNIT UNTIL THEY ARE REPLACED.



CALIFORNIA PROPOSITION 65

WARNING: This part is to be used in a heating appliance that can expose you to chemicals including benzene, which is known to the State of California to cause cancer and birth defects or other reproductive harm. For more information:

www.P65Warnings.ca.gov

1. The optional log set contains seven different log shapes. Make sure that the log pieces sit behind and in front of the burner. It is important that the logs do not interfere with the burner or pilot flame. Place the large **#1 log** at the back of the firebox, tight against the back wall flange. **(Fig.1)**



Fig.1

2. Place **#2 ember base** flush with firebox front edge. **(Fig.2)**

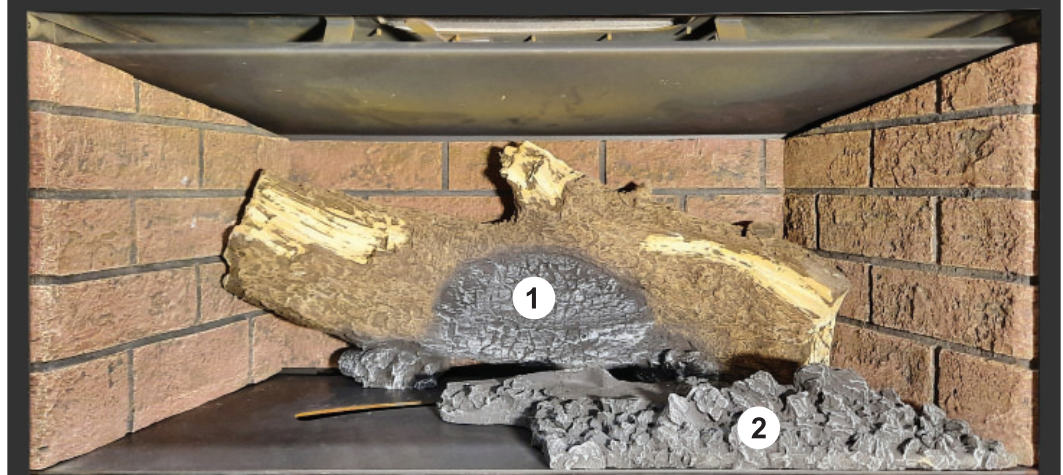


Fig.2

3. Interlock **#3 ember base** with **#2 ember base**, keep flush with firebox front edge. **(Fig.3)**

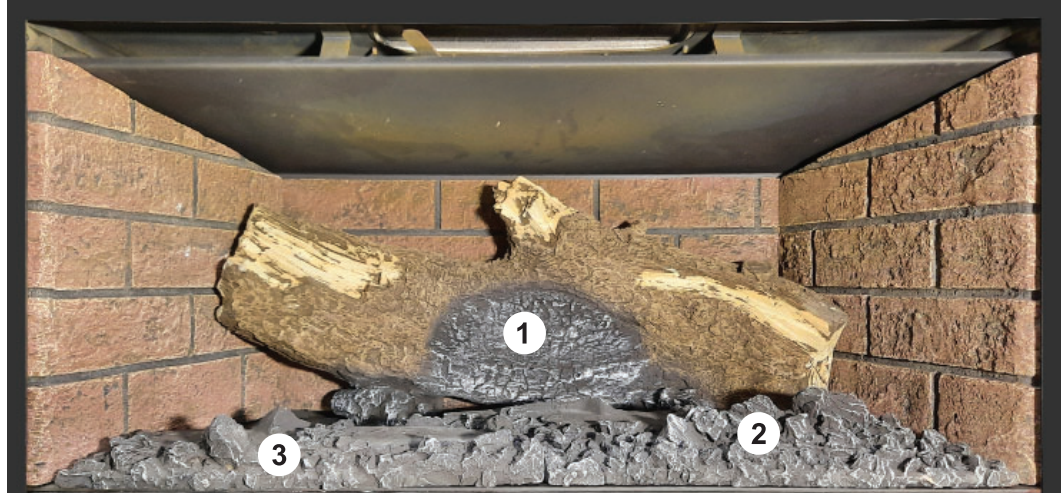


Fig.3

- 4. Position **#4 log** on top of **#3 ember base**. (Fig.4)

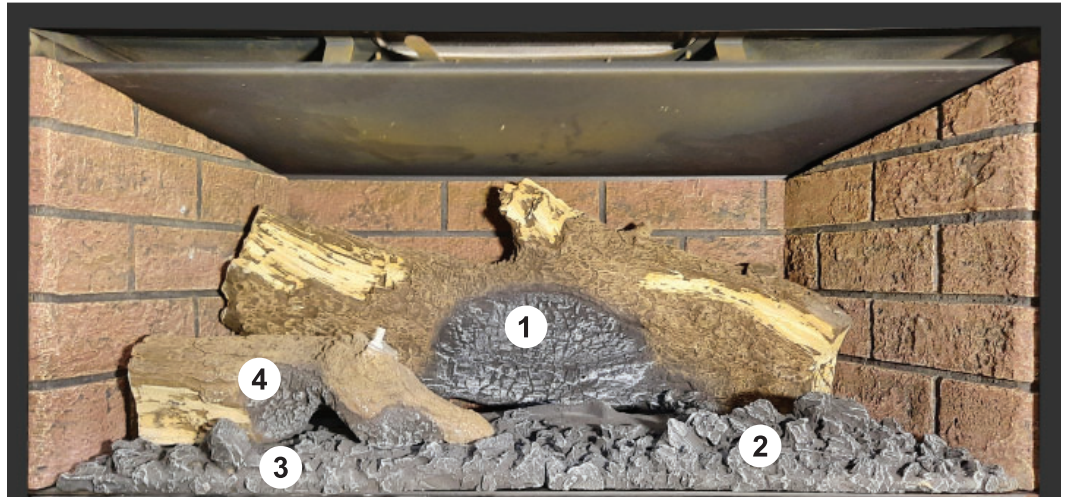


Fig.4

- 5. Position **#5 log** on top of **#2 ember base**. (Fig.5)



Fig.5

- 6. Position **#6 log** on positioning pin of **#4 log** and ledge of **#1 log**. (Fig.6)

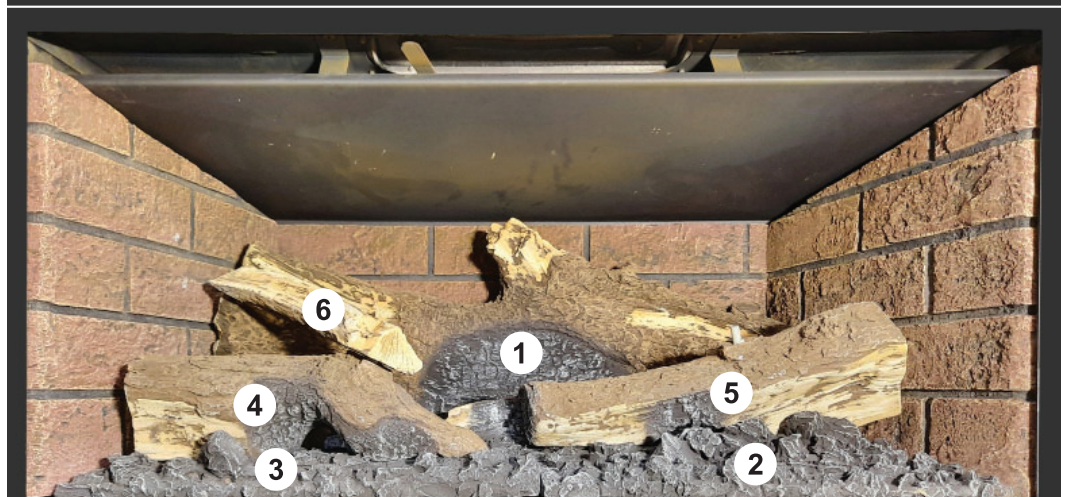
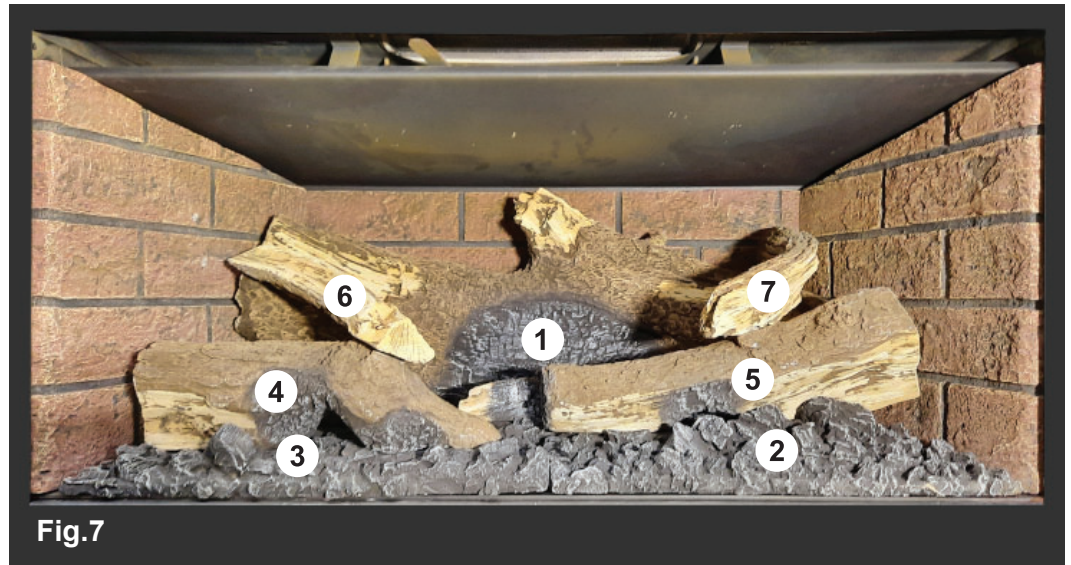


Fig.6

- 7. Position #7 log on positioning pin of #5 log and flat ledge of #1 log. (Fig.7)



- 8. Finished flame appearance. (Fig.8)



Manufactured By

Valley Comfort Systems Inc.
1290 Commercial Way
Penticton, BC V2A 3H5
CANADA
Phone: 250-493-7444
Fax: 250-493-5833

Blaze King Industries
146 A Street
Walla Walla, WA 99362
U.S.A.
Phone: (509) 522-2730
Fax: (509) 522-9803